

Lunchtime Clubs

For self esteem, pupils with learning difficulties, homework and arts and crafts.

Contact Teacher

Every department in the school has a link teacher with the department and we ensure that all staff receive all relevant information regarding support for pupils.

Curriculum Development

We also advise departments on suitable materials, resources etc to allow them to cater for all ability ranges including the more able.

Outside Agencies

The department has highly developed links with outside agencies including Psychological Services, Careers Officers, Medical Agencies, Scottish Qualifications Authority and Colleges.

Parents

We operate an 'open door' policy and are willing to speak or meet with parents whenever possible. We do have teaching commitments but if we cannot be contacted we will call back or arrange an appointment for you.

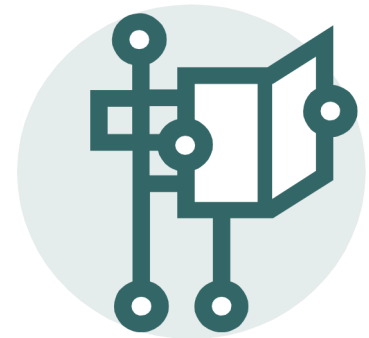


If you have any concerns regarding your child or some aspect of their work, please do not hesitate to get in touch with the Pupil Support Department.



KYLE ACADEMY

PUPIL SUPPORT DEPARTMENT



Information for Parents

**Kyle Academy
Overmills Road
Ayr
KA7 3LR**



Tel:01292 612338

STAFF

Mrs S Quigley, Principal Teacher

Mrs Sutherland, Pupil Support Teacher

Mrs Blair, Cluster Pupil Support Teacher

Ms Baillie, Cluster Pupil Support Teacher

Mrs McPherson, Well Being Officer

Mrs Duncan, School Assistant

Mrs Campbell, School Assistant

Mrs Wagstaff, School Assistant

Ms Taylor, School Assistant

Mrs Turnbull, School Assistant

Mrs Griffiths School Assistant

Miss Hiddleston, School Assistant

Mrs Wilcox, School Assistant

Mrs McCulloch, School Assistant

In addition a number of specialist peripatetic teachers visit the school on a regular basis.

AIMS

- To ensure that every child has access to an appropriate curriculum at all stages, whether they experience difficulty with the learning process or find that their talents need to be extended.
- To support pupils who may be experiencing difficulties with the curriculum.
- To respond to the needs of pupils who are having social or emotional difficulties working closely with Guidance Staff.
- To provide a secure and stable environment for any pupil experiencing difficulties.
- To work closely with parents to ensure that the educational experience of all pupils is a positive one.

How Can We Help?

By building up a profile of every child in S1. This will include information from primaries and our assessments. The progress of all pupils will be monitored at all stages. Supports include:

Co-operative Teaching

Support staff work alongside subject teachers - allowing pupils more individual attention.

Individual Tuition

This allows pupils with specific or general difficulties to work either in a one to one situation or in a small group.

Providing specialist services

Pupil Support staff provides exceptional services to individual pupils' e.g. short- term assistance to help pupils catch up or adjust to new school or class.

Staff development

Specialist staff in Additional Support Needs are able to contribute to the enhancement of their colleagues' professional development.

Consultancy

Support staff, teachers from specialist advisory services and outside services advice SLT and colleagues on ways of improving quality and effectiveness of teaching and learning throughout the school and on particular areas of subjects in the curriculum; they also give advice and guidance on the learning needs and programmes of individual pupils.